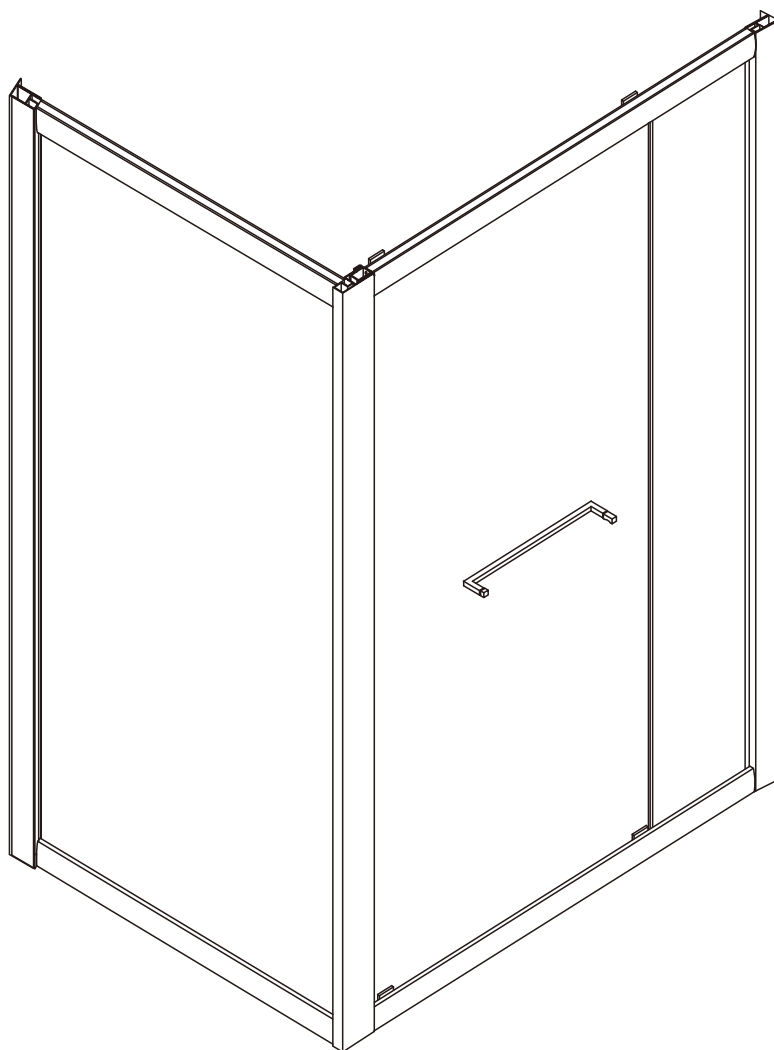


INSTALLATION GUIDE



Our products may have changes without prior notice.

IMPORTANT: Please read the complete instructions before commencing fitting.

Make sure the tray is 100% level in all directions.

Check that you have the tools required.

Check the installation site is compatible with the size of shower enclosure supplied.

Check all the enclosure components are present.



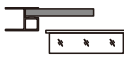














Check the installation kit is complete.

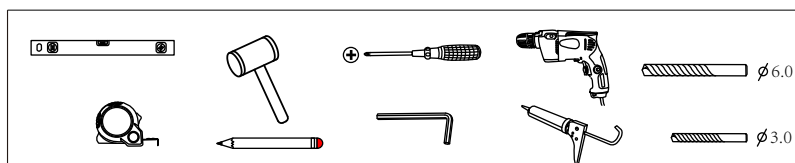
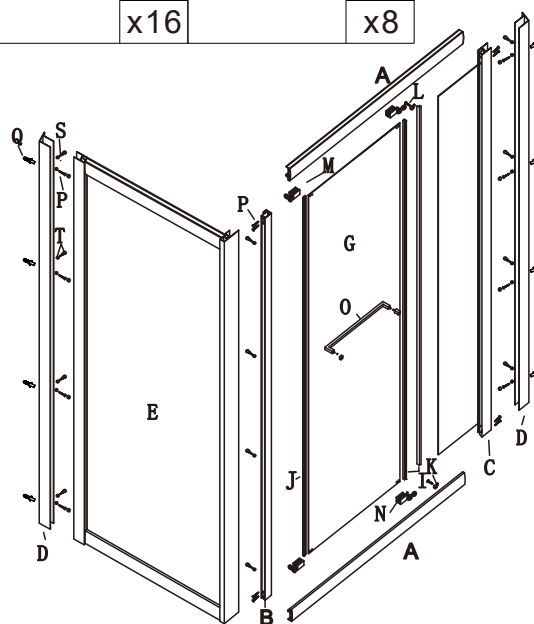
Do Not attempt to install the product unless you can tick all boxes.

The wall plugs supplied with the installation kit are for use in solid walls. Hollow or 'stud partition' walls will require alternative fixings. Please consult a hardware supplier for the correct type. It may also be necessary to consult your tiling supplier about the correct method for drilling your tiles.

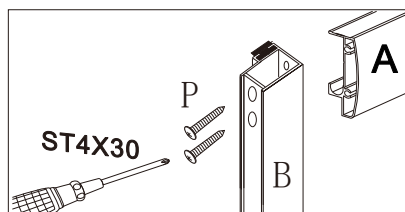
ATTENTION: Take extreme care when handling glass, wear protective eyewear and clothing. Do not leave the glass on hard surfaces and avoid contact between the glass edges and hard surfaces or impacts during the installation.

Fixing kit components:

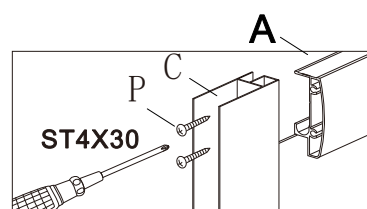
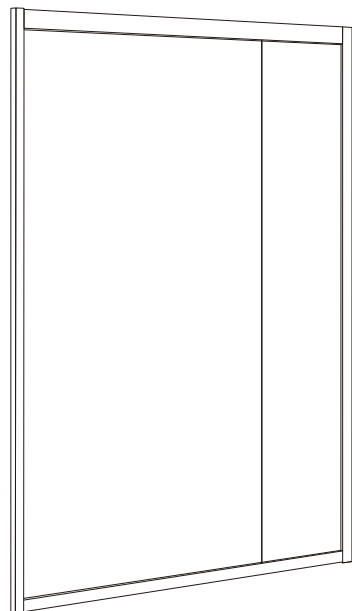
A  x2	B  x1	C  x1	D  x2	E  x1
G  x1	I  x2	J  x1	K  x2	L  x2
M  x1	N  x1	O  x1	P  x16	Q  x8
S  x12	S  x20			



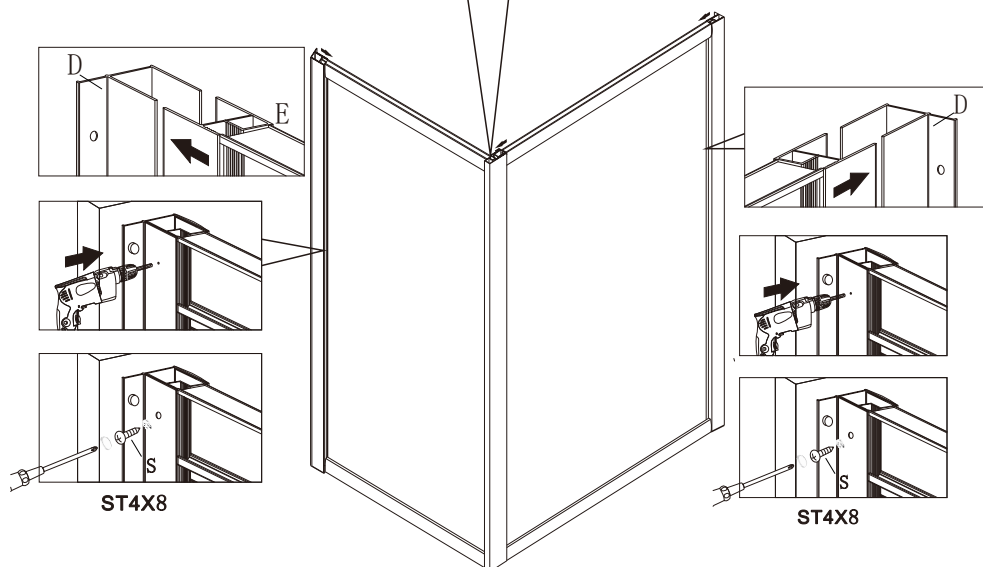
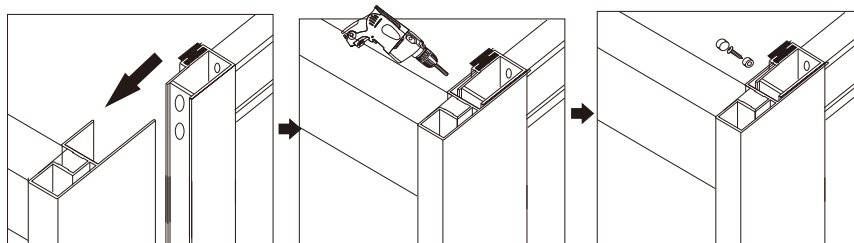
Step 1



C	A
P	B

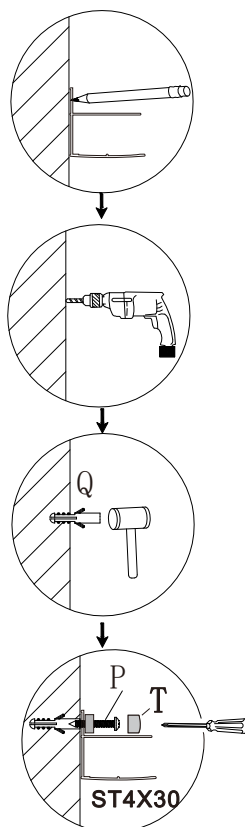
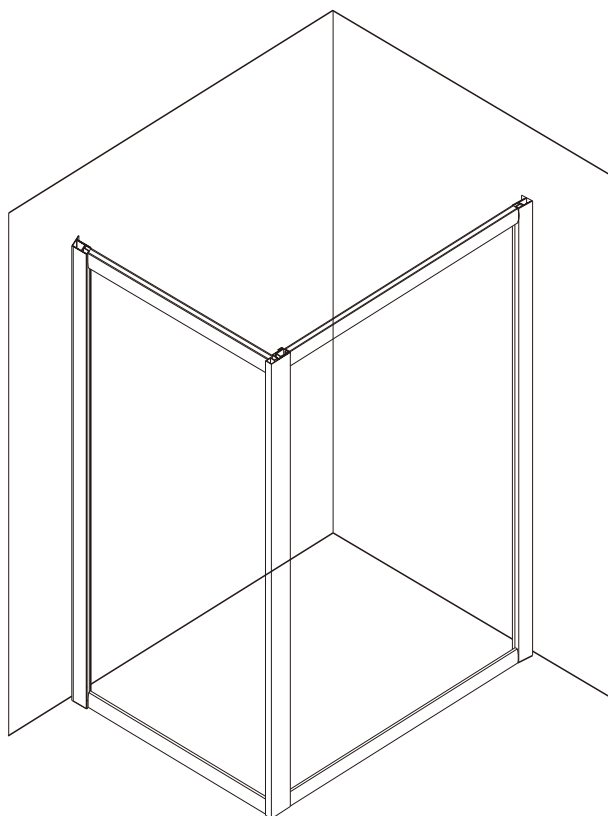


Step 2



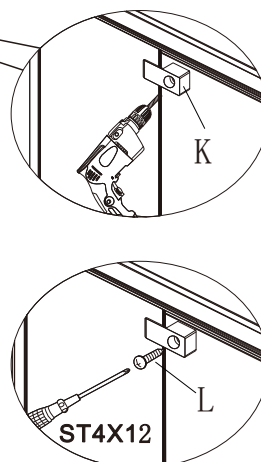
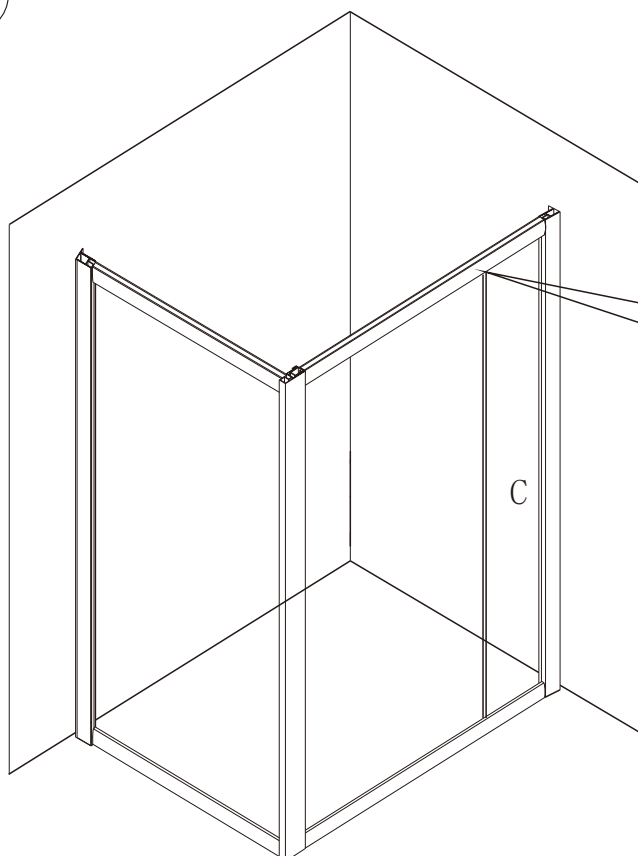
E	
D	
T	
S	

Step 3



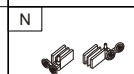
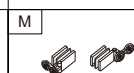
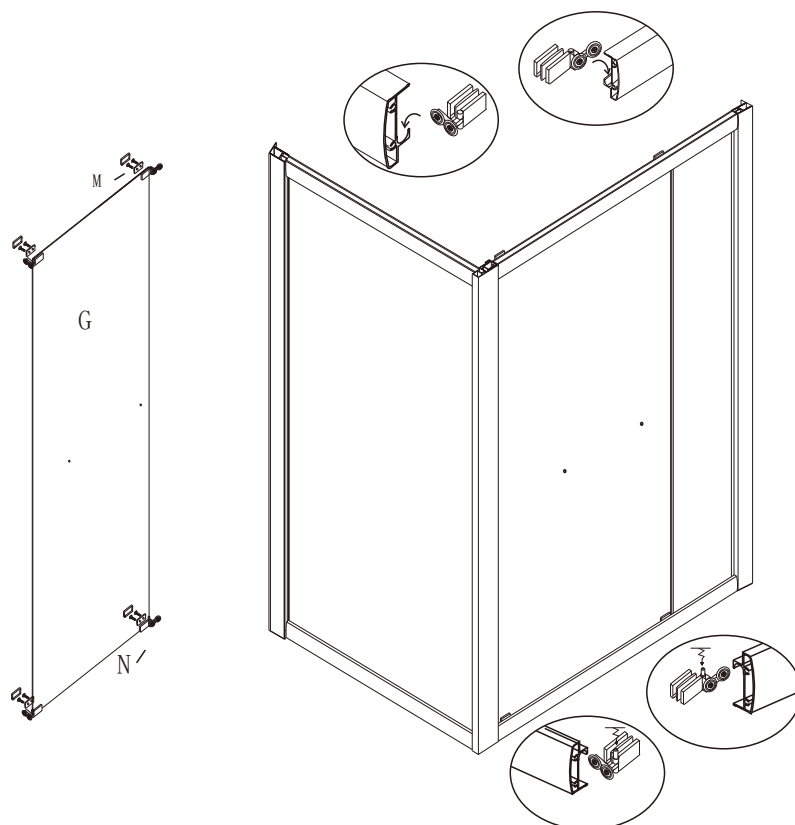
Q	T
D	P ST4X30

Step 4

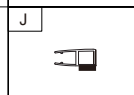
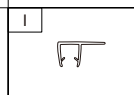
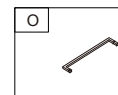
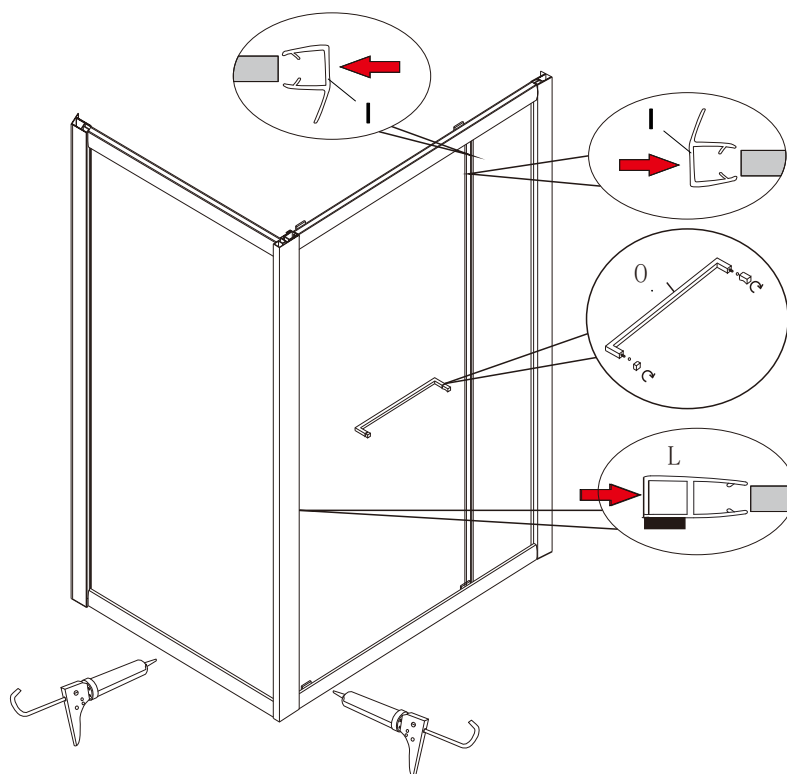


L ST4X12	K

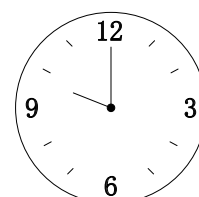
Step 5



Step 6



It is prohibited to use within 24 hours



PRODUCT MAINTENANCE:

1. Tempered glass can be clean with nonabrasive bathroom cleaner or any glass cleaner you use elsewhere in your home. Rinse off any glass cleaner that gets on the aluminum as soon as possible to avoid damage to the anodized surface. Avoid striking it with any sharp or hard objects. Such damage can cause either immediate or delayed breakage of tempered glass.
2. The aluminum in your shower enclosure is durable and resistant to water damage. It is advisable, but not necessary to wipe it with your towel after your shower. Clean it as often as needed to keep the buildup off. Never use any type of abrasive cleaner. Use only a soft damp cloth and nonabrasive bathroom cleaners.
3. Maintenance of wheel: A: For plastic wheel, use a little lubricating oil to keep it smooth and long last.
B: For metal wheel except adding of oil, if shower has not been used for a long time, you can dry the wheel and put a little grease to keep it well working conditions.
C: Adjust wheel screw periodically to guarantee moving door effective bearing and sliding.

TRANSPORT AND STORAGE:

1. When storing the enclosure do not place products superimposed on the packaging or place the container near of corrosive chemicals.
2. If you must ship the product, put it up without forcing, without blocking and without colliding with other products mechanically more resistant.
3. To use the enclosure for a long time, keep the enclosure in a dry and well - ventilated location, without any air corrosive.

Thank you for choosing our products.